

#### FEATURES

- ✓ Individual pipe identification
- ✓ Adaptive Scan Threshold
- ✓ Wide sensitivity range
- ✓ Laser based smoke detection
- ✓ VESDAnet™ communication
- ✓ 4 alarm levels per sector
- ✓ High efficiency aspirator
- ✓ Dual stage air filter
- ✓ Easy to replace air filter
- ✓ 7 or 12 programmable relays option
- ✓ AutoLearn™
- ✓ Up to 2,000m<sup>2</sup>



#### PRODUCT DESCRIPTION

The LaserSCANNER is similar to the standard LaserPLUS detector, but also includes a valve mechanism in the inlet manifold and software to control the airflow from the four VESDA sectors (pipes). This configuration enables a single VESDA zone to be divided into four separate sectors, for example, distinguishing between separate voids within a room.

The LaserSCANNER draws air from all sectors in use. If the smoke level reaches the Adaptive Scan Threshold, the LaserSCANNER quickly scans each pipe to identify which pipe is carrying smoke. If more than one pipe is transporting smoke, the sector with the highest smoke concentration is designated as the First Alarm Sector (FAS). Once Fast Scan is completed and the FAS identified, the LaserSCANNER continues to closely monitor all four sectors (pipes) to monitor fire growth and maintain full protection of the area. There are four alarm levels (Alert, Action, Fire 1 and Fire 2) for each sector (pipe) and the sensitivity for each alarm level can be set to ensure the optimum alarm thresholds are applied for each sector.

The LaserSCANNER display has a bar graph to indicate the overall smoke level, alarm threshold and fault indication. The bar graph displays the individual sector smoke levels during the scanning sequence. There is an extra LED to indicate that a First Alarm Sector (FAS) has been identified and an extra function to the Silence Button to allow for Manual Scan to be initiated. The LaserSCANNER display module can be mounted into the LaserSCANNER front cover or remotely into a 19in subrack or a remote box.

The LaserSCANNER detector can be fitted with a programmable 7 or 12 relay termination card. Relays may be mounted in a remote box or in a 19in subrack.

The status of the detector, and all alarm, service and fault events, are transmitted to displays and external systems via VESDAnet, VESDA's fault tolerant communications protocol. The VESDAnet loop provides a robust bi-directional communication network between devices, even allowing continued operation during single point wiring failures. It also provides system programming from a single location and forms the basis of the modular nature of the VESDA system.

The LaserSCANNER has both the AutoLearn™ and Referencing software functions to ensure optimum operation in different environments and to eliminate the occurrence of nuisance alarms. AutoLearn monitors the ambient environment and sets the most appropriate alarm thresholds (Alert, Action, Fire 1, Fire 2) during the commissioning process. Referencing ensures external pollution to a protected environment does not interfere with the true smoke level being detected.

**TECHNICAL SPECIFICATIONS**

Supply Voltage	18 to 30Vdc				
Power Consumption @ 24Vdc No Display or Programmer		Aspirator @ 3000rpm		Aspirator @ 4200rpm	
		<b>Quiescent</b>	<b>With Alarm</b>	<b>Quiescent</b>	<b>With Alarm</b>
	<b>Power</b>	5.8W	7.4W	9.6W	11.3W
	<b>Current</b>	240mA	310mA	400mA	470mA
Dimensions	350mm x 225mm x 125mm				
Weight	4.0kg (9 lbs) including Display and Programmer modules				
IP Rating	IP30				
Operating Conditions	<b>Tested to:</b> -10°C–55°C <b>Detector Ambient:</b> 0°C–39°C (Recommended) <b>Sampled Air:</b> -20°–60°C <b>Humidity:</b> 10%–95% RH, non-condensing  <i>Please consult FireSense for operation outside these parameters or where sampled air is continually above 0.05% obs/m (0.015% obs/ft) under normal operating conditions.</i>				
Sampling Network	<b>Aggregate pipe length:</b> 200m <b>Pipe Modelling Design Tool:</b> ASPIRE2™				
Pipe Size	Minimum flow per pipe 15L/min. External diameter 25mm Internal diameter 15–21mm				
Programmable Relays	7 or 12 Relays option Contacts rated 2A @ 30Vdc Default - 7 Relays: NO/NC contacts Alert, Action, Fire 1, Fire 2, Maintenance, Urgent, Fault & Isolate Default - 12 Relays: 10 x NO, 2 x NO/NC contacts Alert, Action, Fire 1, Fire 2, Maintenance, Urgent Fault & Isolate, First Alarm Sector 1 to 4 and Scan				
Cable Access	8 x 25mm knockouts in various positions				
Cable Termination	Screw terminals 0.2–2.5 sq mm (30–12 AWG)				
Alarm Sensitivity Range	0.005%–20% obs/m				
Alarm Threshold Setting Range	<b>Alert:</b> 0.005%–1.990% obs/m <b>Action:</b> 0.010%–1.995% obs/m <b>Fire 1:</b> 0.015%–2.00% obs/m <b>Fire 2:</b> 0.020%–20.00% obs/m* <i>*Limited to 12% obs/m in UL mode</i>				
Event Log	Up to 18,000 events stored on FIFO basis.				
AutoLearn	Minimum 15 minutes, maximum 15 days. Recommended minimum period 1 day. During AutoLearn thresholds are NOT changed from pre-set values.				

#### TECHNICAL SPECIFICATIONS

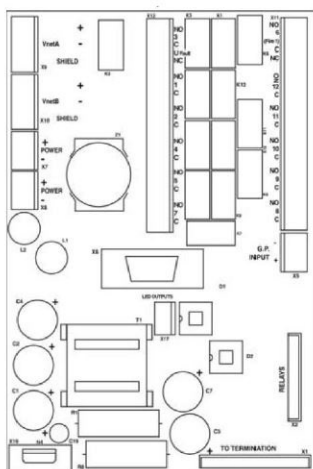
Software Features	<p><b>Event Log:</b> Up to 18,000 events stored on FIFO basis.</p> <p><b>AutoLearn:</b> Minimum 15 minutes, maximum 15 days. Recommended minimum period 1 day. During AutoLearn thresholds are NOT changed from pre-set values.</p> <p><b>Referencing:</b> Compensation for external ambient conditions</p> <p><b>Four Alarm Levels (per sector pipe):</b> Alert, Action, Fire 1 &amp; Fire 2 Two Fault</p> <p><b>Warning Levels:</b> Maintenance and Major fault</p> <p><b>Software Programmable Relays:</b> 7 or 12</p> <p><b>Maintenance Aids:</b> Filter &amp; Flow monitoring. Event reporting via VESDAnet or Event Log.</p> <p><b>Adaptive Scan Threshold:</b> Detector selects the appropriate scan threshold automatically.</p>
-------------------	--

#### ORDERING INFORMATION

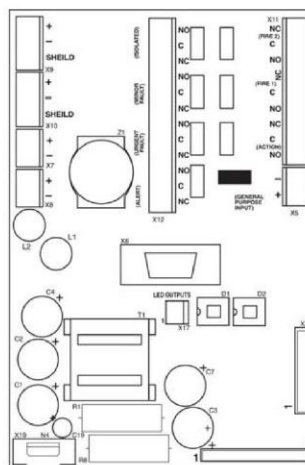
VLS-204	Display - 7 relays
VLS-214	Display & programmer - 7 relays
VLS-304	Display - 12 relays
VLS-314	Display & programmer - 12 relays
VLS-600	Fire 1 & OK LEDs - 7 relays
VLS-700	Blank with Fire 1 & OK LEDs - 12 relays

#### DIAGRAM

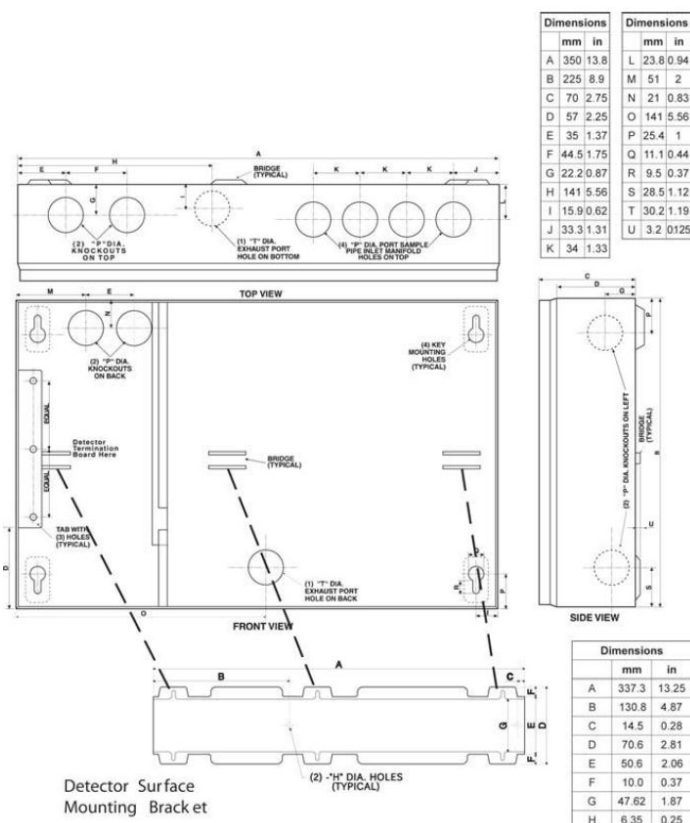
Detector Termination Card (12 Relay Version)



Detector Termination Card (7 Relay Version)



#### DIMENSIONS



#### APPROVALS

- ✓ UL
- ✓ ULC
- ✓ FM
- ✓ LPCB
- ✓ VdS
- ✓ CFE
- ✓ AFNOR
- ✓ ActivFire certified – Listing No. afp-1083