



IFS-2001

Solid State Warning Sign

TECHNICAL DATA BRIEF and SPECIFICATION

Revision 2.00

APPROVALS

EMC Approval No T20410

Serial No. _____

Date of Manufacture ____ / ____ / ____



Function:

The IFS-2001 solid state warning signs are designed to alert any occupants of an area, of a potentially dangerous situation.

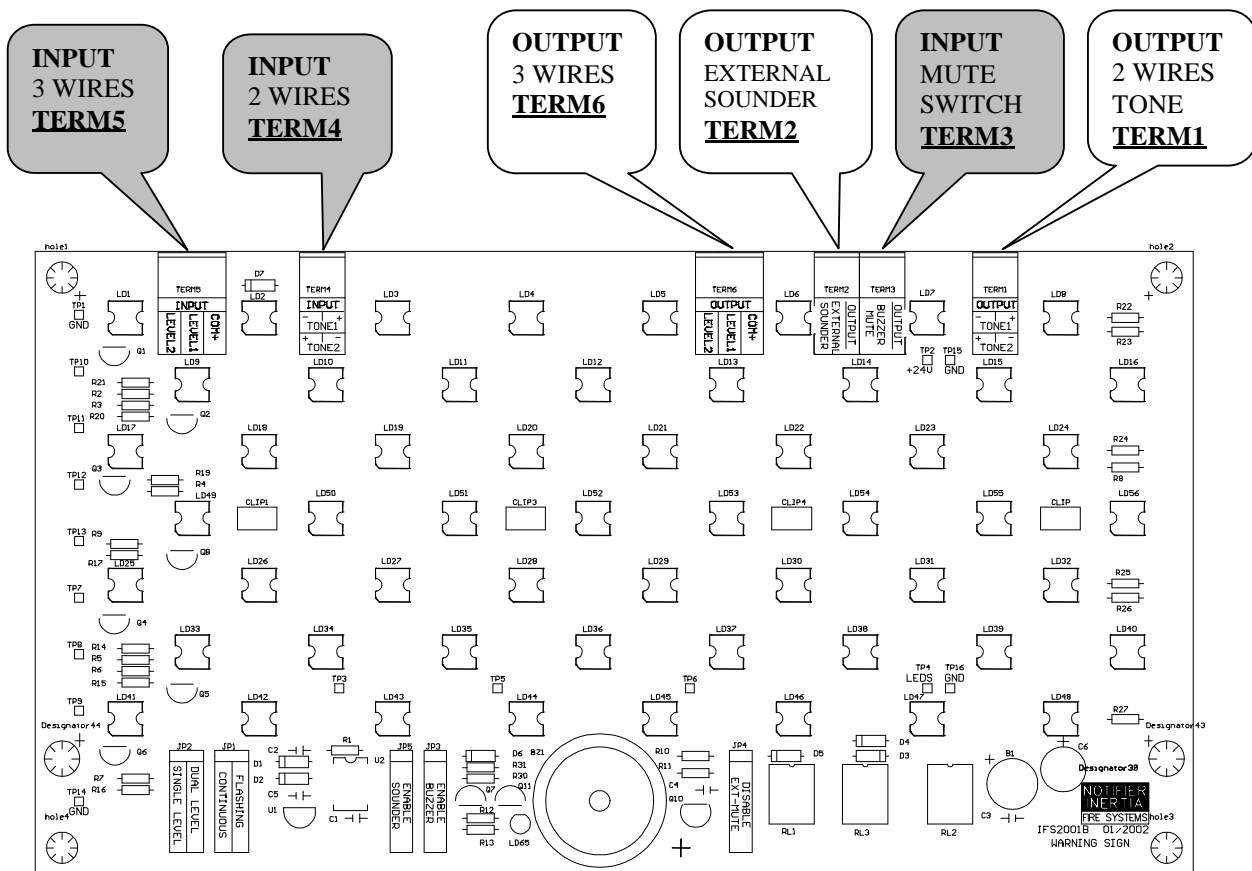
They are made with super efficient, high intensity, solid state LED's to greatly reduce power consumption and increase reliability.

The warning signs may be configured as single or dual level, with the dual level units driven via a two wire or three wire system. In the two-wire dual level system, a level one alarm becomes a level two alarm by reversing the polarity of the wires. In the three-wire system, individual first and second level alarm signals are required.

An on-board buzzer is included to provide an audible warning. This buzzer may be disabled by removing JP3 or muted externally via Term3. JP4 can be used to diable the external mute input.

An external two tone sounder to AS2220, (Carillon #ICN010005), may be connected via the terminal Term 2. The external sounder is enabled by adding JP5.

A mute push-button (N/O) may be connected via terminal Term 3 to enable the user to silence both the internal buzzer and external sounders. This is disabled by adding JP4.



PCB layout

Specification:

- Operational Voltage 18Vdc to 28Vdc
- Power Consumption Continuous At 24Vdc 55mA Level 1
At 24Vdc 140mA Level 2
(100mA Muted)
- Dimensions 315mm(L)x190mm(H)x73mm(D)
- I P Rating IP50 (IP65 for W/P version)
- Environmental -10 Deg C to +55 Deg C Dry heat
+40 Deg C @93% Relative Humidity

INPUT

Term 5 (3 wire / 2 Level inputs)

COMMON +	18Vdc to 28Vdc
LEVEL1	Switch 0V
LEVEL2	Switch 0V

Term 4 (Single pair polarity reversing / 2 State input)

LEVEL 1	0V – 24V
LEVEL 2	24V – 0V

Note: If this input is used to connect an EOL board to the Warning Sign refer to page 6 for connection information.

Term 3 (Buzzer Mute)

BUZZER/SOUNDER MUTE	Push Button Switch 'N/O' (Optional)
---------------------	-------------------------------------

OUTPUT TO NEXT SIGN

Term 6 (3 wire / 2 Level Outputs)

COMMON +	18Vdc to 28Vdc
LEVEL1	Switch 0V
LEVEL2	Switch 0V

Term 1 (Single pair polarity reversing / 2 Level Output)

LEVEL 1	0V – 24V
LEVEL 2	24V – 0V

Note: If an EOL board is connected to the Warning Sign refer to page 6 for connection information.

Term 2 (External Sounder - Mutable)

External Sounder	Polarity reverses and follows state of INPUT (Term 4)
------------------	---

CONFIGURATIONS (Refer to PCB figure)**JP 1 (CONTINUOUS / FLASHING)**

1-2	CONTINUOUS	LED's Permanently ON
2-3	FLASHING	LED's flashing at the rate approx 1.5Hz

JP 2 (SINGLE /DUAL LEVEL)

1-2	SINGLE LEVEL	Full sign on for both LEVEL 1 & 2
2-3	DUAL LEVEL	Half sign on for LEVEL 1 Full sign on for LEVEL 2

JP 3 (ENABLE BUZZER)

1-2	ENABLE BUZZER	On board buzzer will activate for both LEVEL 1 & 2
-----	---------------	--

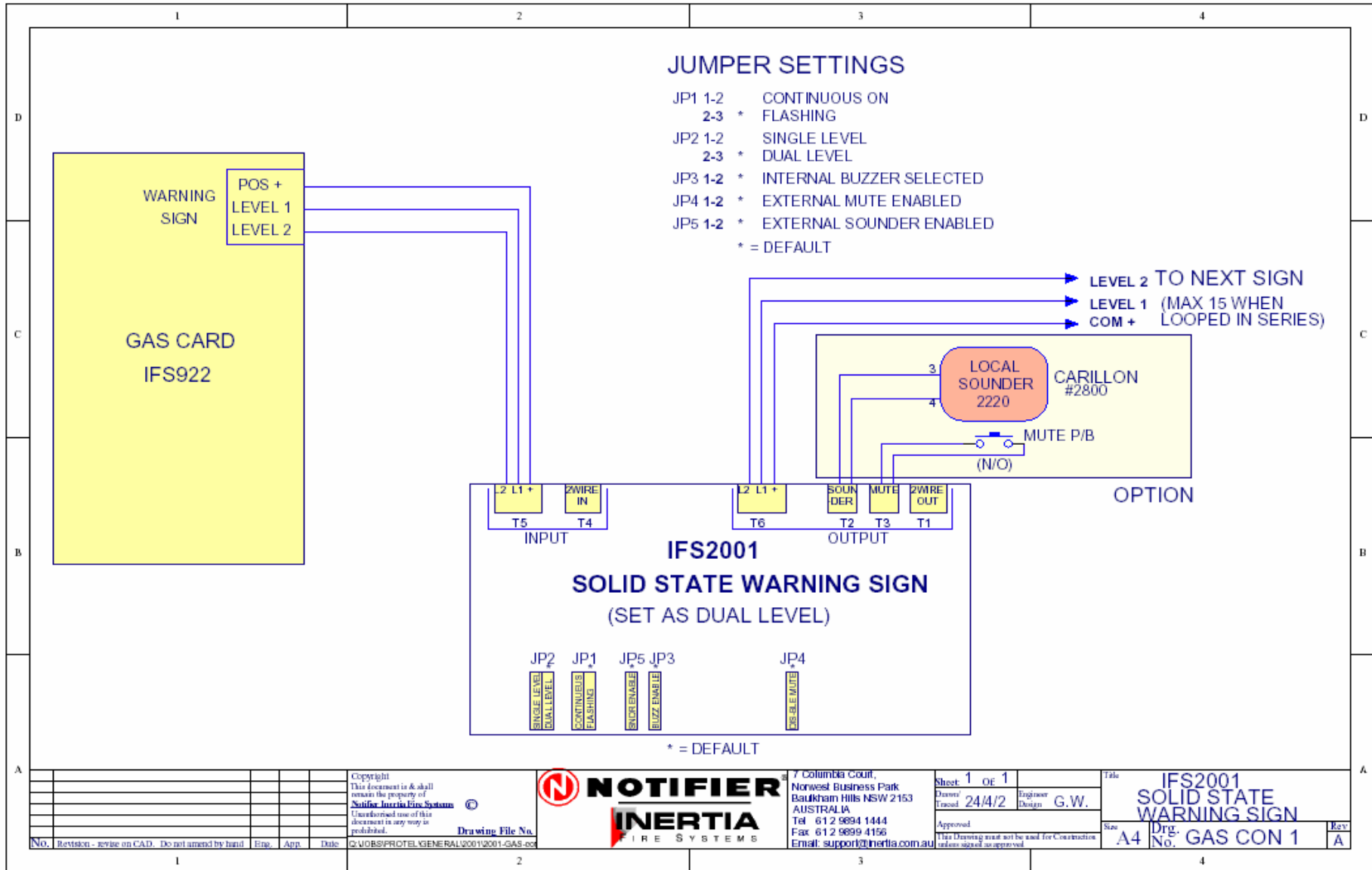
JP 4 (DISABLE EXTERNAL MUTE)

1-2	EXTERNAL MUTE	Disable external mute for internal and external sounder.
-----	---------------	--

JP 5 (ENABLE EXTERNAL SOUNDER)

1-2	ENABLE EXTERNAL SOUNDER	External sounder will activate on level 1& 2 with the tone dependent on input polarity
-----	-------------------------	--

Connection to IFS-922 Gas Module



Connection to NIFS-2008 Gas Module

