

Features:

- Sealed retard mechanism
- Visual switch activation
- Rugged dual SPDT switches enclosed in a durable terminal block
- Designed for both indoor/outdoor use
- Tamper resistant cover screws

- T Tap version also available

- UL Approved
- FM Approved
- ActivFire Listed

Description:

The WFD series sprinkler flow switches consists of a rugged, weatherproof enclosure. Designed for both indoor and outdoor use, the WFD series operates across a wide temperature range, from 0°C to 49°C.

Reliable Performance – UL, FM and ActivFire Listed with tamper resistant cover screws to prevent unauthorised entry. Inside, two sets of change-over contacts are enclosed in a durable terminal block to ensure reliable performance.

The WFD series incorporates a mechanical retard feature, which minimises the risk of false alarm due to pressure surges or air trapped in the sprinkler system. In addition, the mechanical retard's unique sealed design is immune to dust and other contaminants.

The WFD series is designed to simplify installation. Two conduit openings permit easy attachment to the local alarm system.

The WFDT is a "T Tap" unit and comes with 12 flexible plastic paddles to fit 1", 1¼", 1½", and 2" tees. Sizes are marked clearly on the paddles for ease of installation. Plastic paddles slip over the actuating lever and are securely fastened with one screw. The handy depth gauge insures the proper installation depth and clearance of the detector to the tee.

Specifications:

Static Pressure Rating:	450 PSI (3102 KPa)
Operating Temperature Range:	0°C to 49°C
Maximum Surge:	5.4m / second (18ft /sec)
Enclosure Rating:	Suitable for indoor/outdoor use
Triggering Threshold Bandwidth (Flow Rate):	15-38 L/Min. (4-10 GPM)
Contact Ratings:	Two sets of change-over
	10.0 A (½ HP) @ 250 VAC
	2.5 A @ 24 VDC
Compatible Pipe:	Steel water pipe, schedule 10 through 40

Distributors For:



Unit 6
16 Lexington Drive
Bella Vista NSW 2153
Australia

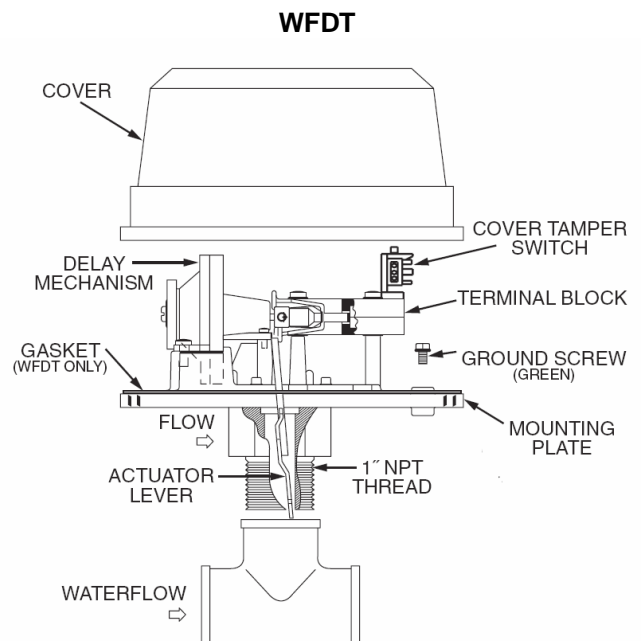
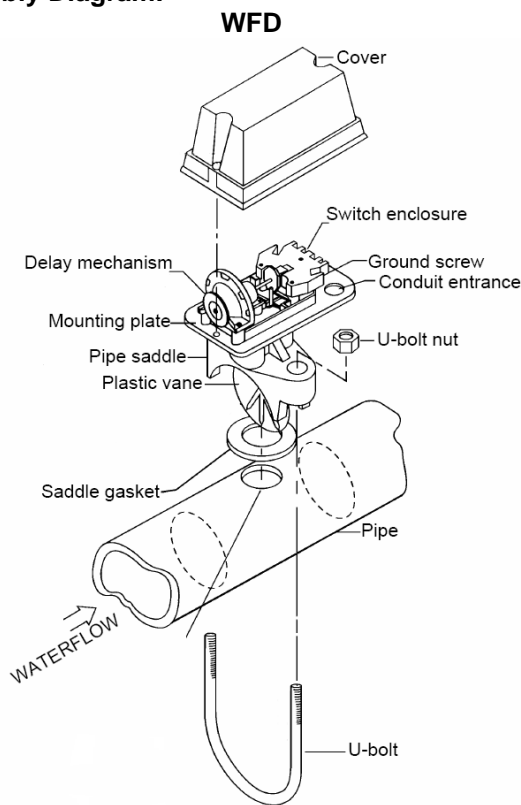
PO Box 7026
Baulkham Hills BC
NSW 2153
Australia

tel 02 8850 2888
fax 02 8850 2999
www.firesense.com.au

Ordering Information:

Model	Pipe Size	Hole Size
SSW-WFD20	2" (50mm)	1 1/4" (30mm)
SSW-WFD25	2 1/2" (65mm)	1 1/4" (30mm)
SSW-WFD30-2	3" (80mm)	2" (50mm)
SSW-WFD40	4" (100mm)	2" (50mm)
SSW-WFD60	6" (150mm)	2" (50mm)
SSW-WFD80	8" (200mm)	2" (50mm)
SSW-WFDT	T TAP – To Suit 1", 1 1/4", 1 1/2" 2" Tees	N/A

Assembly Diagram:



Approvals:



WFD
WFDT

afp-2306
afp-2307



Distributors For:



VESDA

Unit 6
16 Lexington Drive
Bella Vista NSW 2153
Australia

PO Box 7026
Baulkham Hills BC
NSW 2153
Australia

tel 02 8850 2888
fax 02 8850 2999
www.firesense.com.au