



**Features:**

- User-friendly mounting bracket
- Single side conduit entry
- Adjustable length actuator
- Three position switch monitors vandal and valve close signals
- Two SPDT contacts are enclosed in a durable terminal block for added strength
  
- UL Approved
- FM Approved
- ActivFire Listed

**Description:**

The OSY2 consists of a rugged housing, intended for indoor and outdoor use.

The OSY2 features a user-friendly mounting bracket and adjustable shaft to permit mounting to most OS&Y valves, ranging in size from 1" to 12". Its right angle design and wide bracket span provides maximum clearance for valve components, to accommodate troublesome valves. Removing the OSY2's gate valve bracket allows the unit to monitor side-bracket style pressure reducing valves.

Installation is made easier with the single side conduit entrance. By providing a direct conduit pathway to the electrical source, right angle fittings are not required. Installation is further simplified by the adjustable length actuator, which eliminates the need for cutting the shaft.

The OSY2 is equipped with tamper resistant cover screws to prevent unauthorised entry. Inside, two sets of change-over contacts are enclosed in a durable terminal block to assure reliable performance.

**Specifications:**

<b>Overall Switch Dimensions:</b>	14.6cm H x 8.9cm W x 8.2cm D
<b>Contact Ratings:</b>	Two sets of change-over 10.0 A @ 250VAC 2.5 @ 24VDC
<b>Enclosure Rating:</b>	Indoor/outdoor
<b>Operating Temperature Range:</b>	0°C to 49°C
<b>Maximum Stem Extension:</b>	6.7cm
<b>Bracket Span:</b>	5.7cm H x 17.1cm W x 2.5cm D

Distributors For:

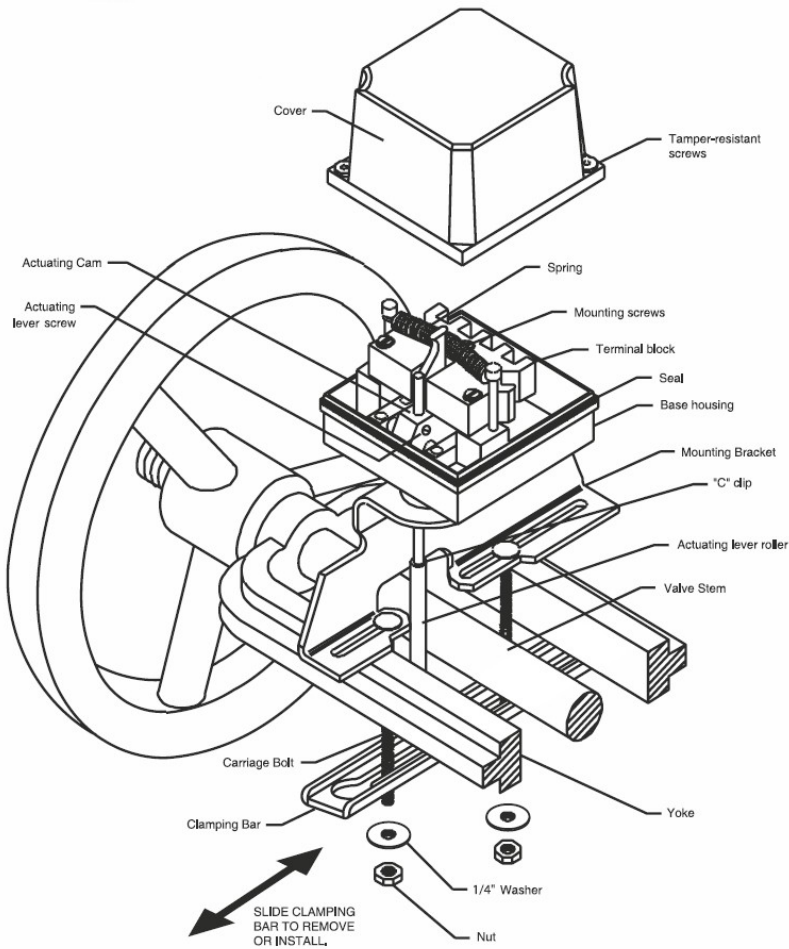


Unit 6  
16 Lexington Drive  
Bella Vista NSW 2153  
Australia

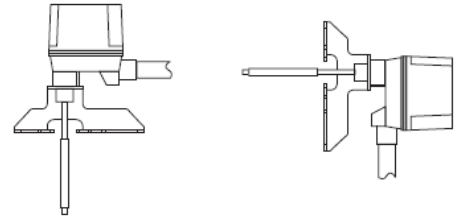
PO Box 7026  
Baulkham Hills BC  
NSW 2153  
Australia

tel 02 8850 2888  
fax 02 8850 2999  
www.firesense.com.au

**Assembly Diagram:**

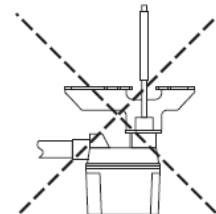


The following are examples of acceptable mounting positions:



Actuator Vertical (Down)    Actuator Horizontal

The following mounting position is not acceptable:



Actuator Vertical  
(Pointing Up)

**Approvals:**



afp-2314



Distributors For:



Unit 6  
16 Lexington Drive  
Bella Vista NSW 2153  
Australia

PO Box 7026  
Baulkham Hills BC  
NSW 2153  
Australia

tel 02 8850 2888  
fax 02 8850 2999  
www.firesense.com.au