



Features:

- Provides audible tones in accordance with AS2220
- Current status clearly displayed on LED indicator
- PA Microphone
- Fits into 2600 cabinet.

Description:

The FireSense OWS-10W-SIDE, 10 Watt Building Occupant Warning System is designed for use in fire alarm installations that require the addition of an OWS amplifier to meet code requirements.

The OWS-10W-SIDE simply fits into the side of 2600 base panel and is powered from the fire panels 24vdc battery backed power supply.

The 100v Speaker line is monitored for open and short circuits as standard and can be expanded to monitor multiple speaker feeds from one amplifier with the option of fitting of an OWS-SDM-4.

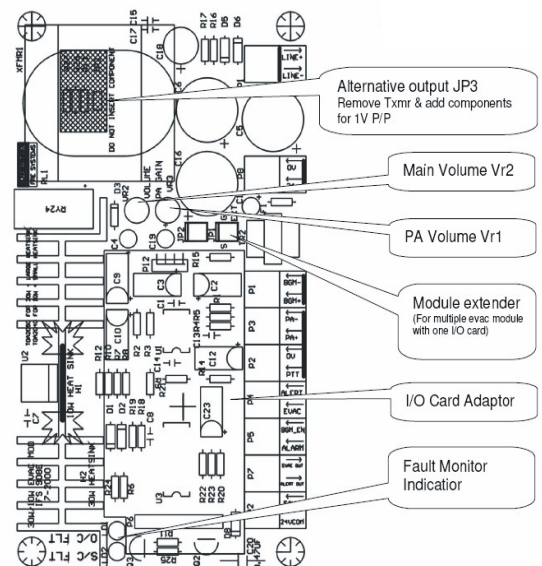
Specifications:

Operational Voltage:	22-28VDC
Output Power:	10 Watts
Speaker Line:	100V
Power Consumption:	Up to 2.0 Amp Peak (24VDC)
EOL Resistor:	47K

Accessories Available:

OWS-SDM-4 4 Way Speaker Line Monitoring Card (4 feeds)
MIC-DESK OWS Desktop Microphone with pre amp fitted

Connection Information:



Distributors For:

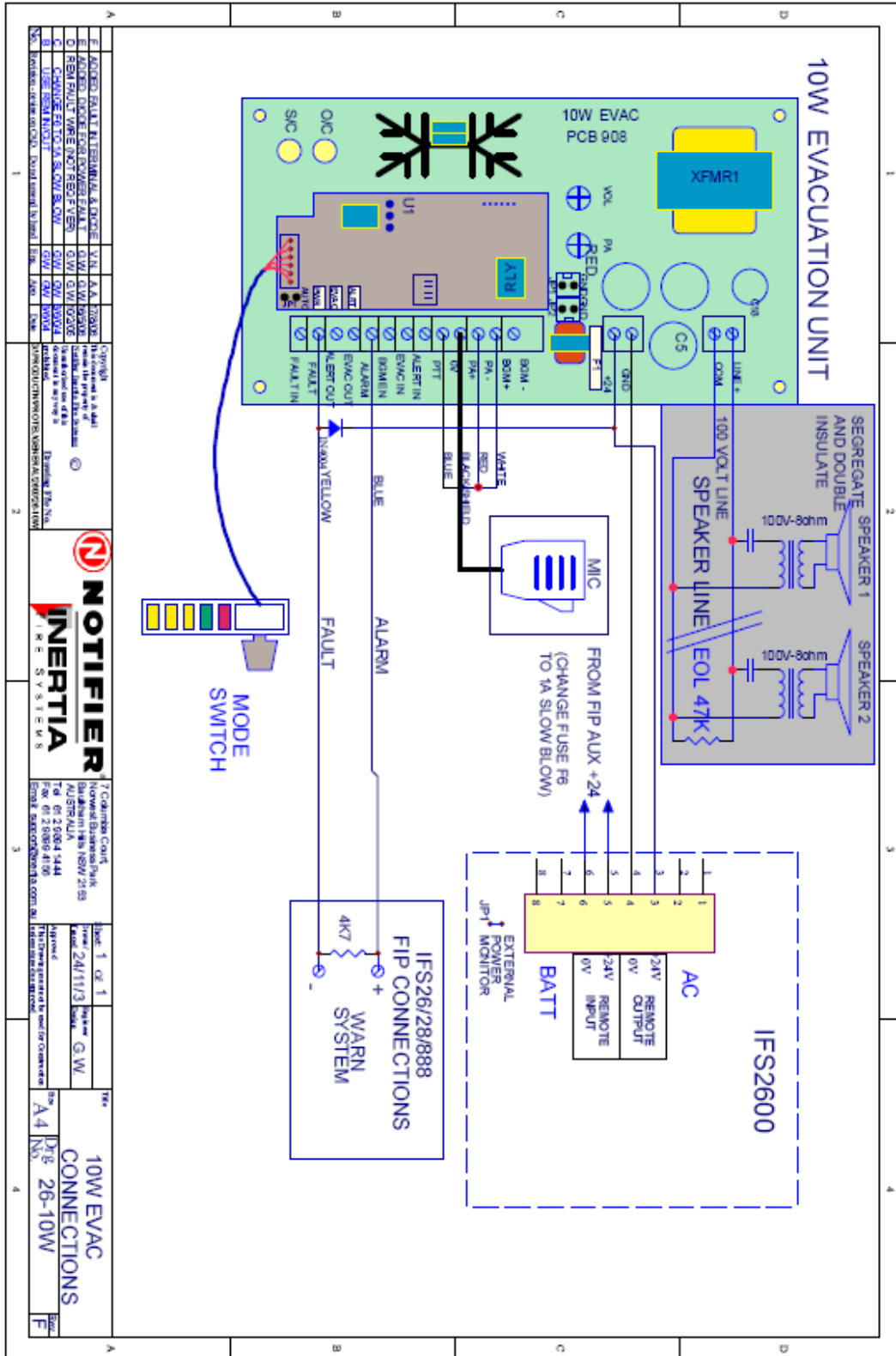


Unit 6
16 Lexington Drive
Bella Vista NSW 2153
Australia

PO Box 7026
Baulkham Hills BC
NSW 2153
Australia

tel 02 8850 2888
fax 02 8850 2999
www.firesense.com.au

Connection Information:



Distributors For:



Unit 6
16 Lexington Drive
Bella Vista NSW 2153
Australia

PO Box 7026
Baulkham Hills BC
NSW 2153
Australia

tel 02 8850 2888
fax 02 8850 2999
www.firesense.com.au